



## INTELLIGENT CUTTING & FINISHING

Jingwei Systemtechnik is a global leader in plotter and digital cutting technology. As technology pioneers, we are committed to driving a revolution through relentless innovation and continuous product enhancement. Our ever-evolving portfolio is designed to meet the dynamic needs of various industries, making Jingwei a trusted name in the footwear, apparel, packaging, signage, electronics, and leather industries.

Our innovation. Your success.

# ADVERTISING SIGNAGE

**SG** 1625/1612/1635

New generation cutting & finishing solution



# JINGWEI

## SYSTEMTECHNIK

With a 30-year legacy of innovation and excellence, JWEI has been at the forefront of cutting technology, shaping the industry with advanced, automated, and highly adaptable solutions. As the leading force in flexible material cutting in the domestic market, we have expanded globally, earning a reputation for precision, efficiency, and high performance.

For over a decade, we have been a trusted partner in the signage and surface graphics industries, delivering digital finishing and cutting systems that seamlessly handle an extensive range of rigid and flexible materials.

Our solutions are engineered to meet the evolving demands of modern production, ensuring unmatched accuracy and reliability.

With a strong emphasis on customization and intelligent automation, JWEI empowers businesses to optimize production, streamline workflows, and maximize efficiency. Built for speed, accuracy, and adaptability, our cutting-edge technology is transforming industries worldwide.

**30<sup>th</sup>**

30 years of technological excellence

**120<sup>+</sup>**

Active in over 120 countries & regions

**300<sup>+</sup>**

More than 300 sales and service networks

**30000<sup>+</sup>**

Chosen by over 300,000 global customers

**8<sup>+</sup>**

Servicing the needs of multiple industry sectors

**200<sup>+</sup>**

More than 200 patents and software copyrights



# SG1625/1612/1635

New generation cutting & finishing solution

Our innovation. Your success.

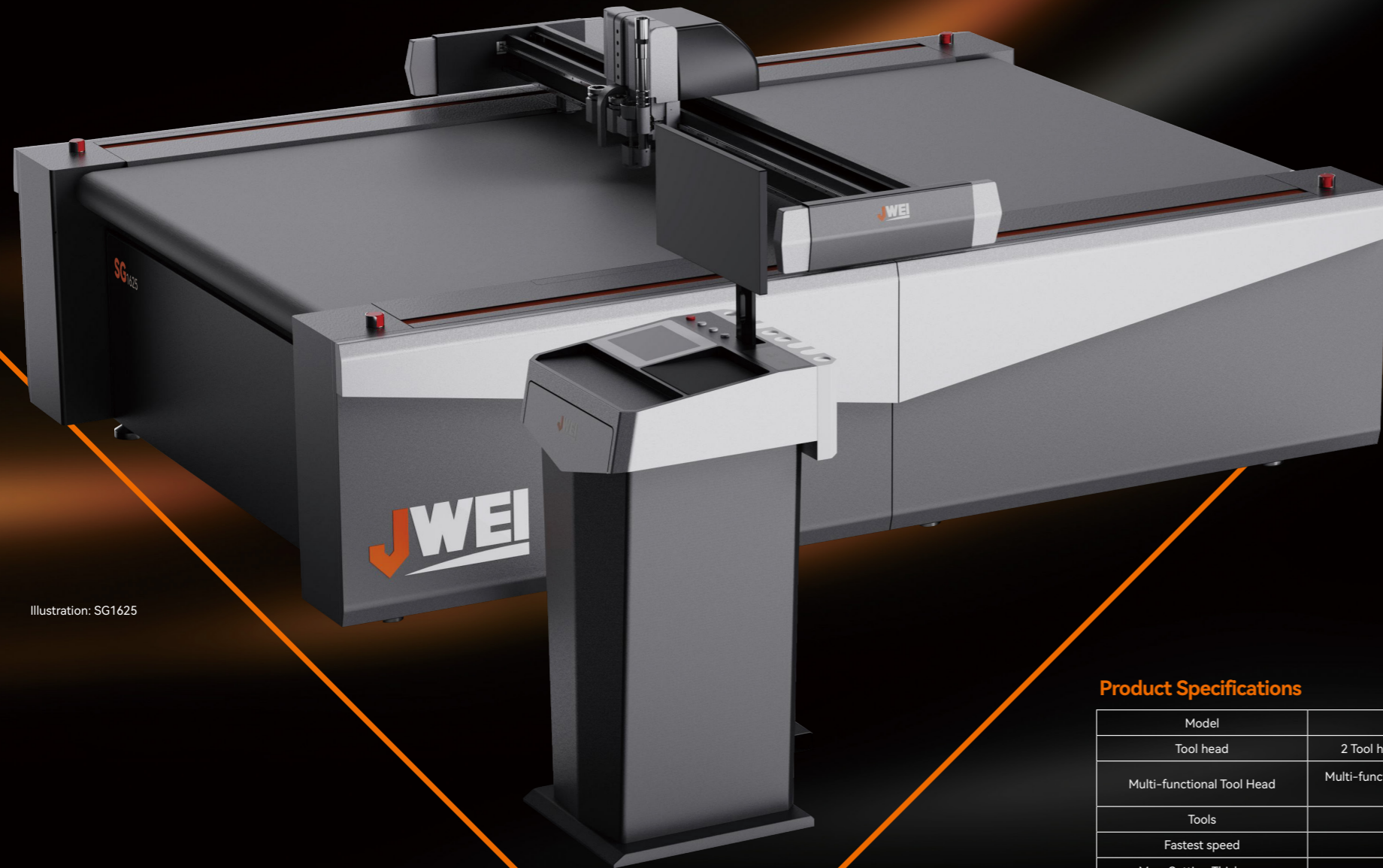


Illustration: SG1625

## Product Specifications

JWEI reserves the right of final interpretation of the following parameters, subject to change without prior notice.

Model	SG1625		SG1612		SG1635	
	2 Tool heads	3 Tool heads	2 Tool heads	3 Tool heads	2 Tool heads	3 Tool heads
Multi-functional Tool Head	Multi-functional Tool Head Multi-tool fixing holes, quick insert tool fixing, easy-to-replace cutting tools, plug-and-play, set cutting, creasing, drawing, router and other functions in one, optional ATC module.					
Tools	Electric oscillating tool, drag knife, rotary tool, router tool module, plotting tools, etc.					
Fastest speed	2000mm/s *					
Max. Cutting Thickness	50mm *					
Repeat Precision	< 0.05mm *					
Cutting Materials	ABS board, PVC board, space board, aluminium-plastic board, lamp sheet, back glue, PVC foam board, KT board, acrylic, magnetic sticker, self-adhesive, etc.					
Material Fixation Mode	Vacuum absorption					
Software resolution	0.025, 0.01, 0.1 optional					
Transmission Mode	Ethernet port					
Drive System	Bus controller, advanced servo system, imported linear guide rail, lead screws, grinding level 0 backlash helical teeth					
Instruction system	HP-GL compatible format					
Machine Power	12kW	14kW	12kW	14kW	12kW	14kW
Rated Voltage	380V±10%					
Machine Weight	1100kG		/		1880kG	
Effective Cutting Size (WxL)	1600mm×2500mm		1600mm×1200mm		1600mm×3500mm	
Machine Size (WxLxH)	2570mm×3380mm×1415mm		2570mm×2080mm×1415mm		2570mm×4380mm×1415mm	

Note: \* Dependent on materials and application



Fast & precise



MES system



Automatic Tool Changer



## Reimagined Design

**Advanced industrial design**  
Featuring a polygonal fold structure for a sleek contemporary aesthetic

**Enhanced ergonomics**  
A superior user experience enhanced by stability and durability



## Optimized functionality

**Smart control software**  
Simplified operation in a single step

**Modular design, flexible splicing**

**Versatile operating platform**  
A variety of tools and blades for an efficient workflow

**Noise reduction technology**  
Now 64db for lower sound and lower frequency



## Performance that delivers

**Improved speeds**  
Now 33.3% faster than the previous generation

**New proprietary chip for precision motion**  
Ultra precise 0.00015s motion control for redefined speed, accuracy, and efficiency

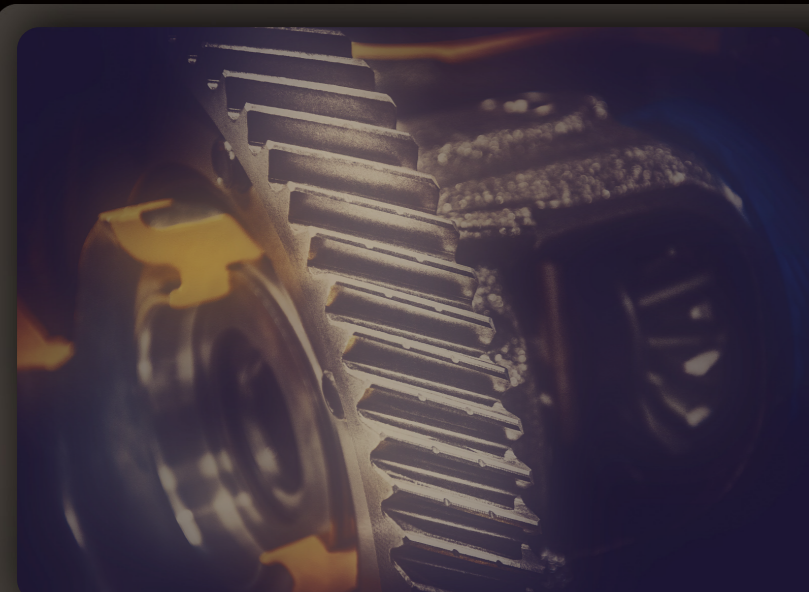
**One touch start**  
Effortless set-up for instant activation



## Maximized Intelligence

**MES System**  
Streamlining production for smooth operation

**Automatic tool changer\***  
Hands free, completing complex changes with one click



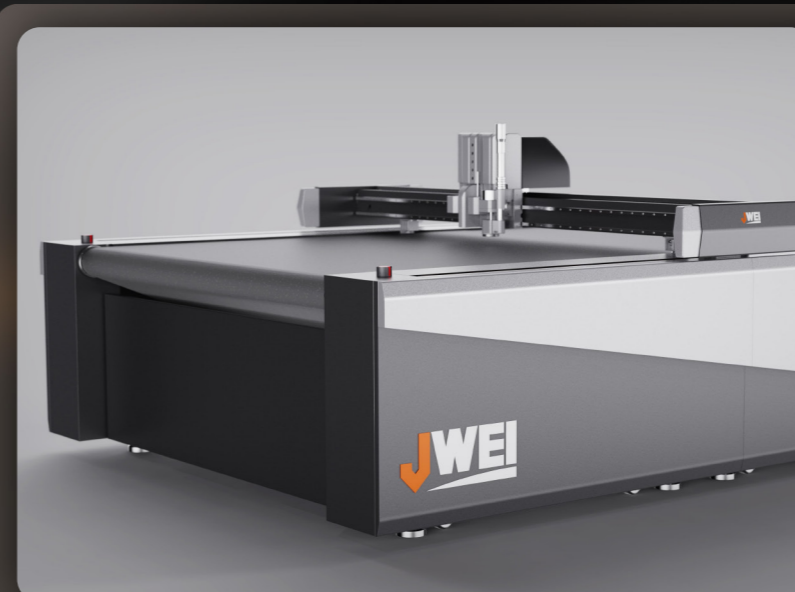
## Increased accuracy

**Enhanced precision**  
Delivered by a fully proprietary control system

**Advanced stability**  
Powered by a modular integrated machine structure

**Grinding grade drive system**  
Engineered with a high-precision gantry control algorithm

**Stronger vacuum hold**  
Over three times the suction power to ensure complete material stability on the bed



## Additional highlights

NFC Access Control

Wireless charging

Automatic tool setting

Scene software

Automatic router tool change\*

...



Our innovation. Your success.

**NINGBO JINGWEI SYSTEMTECHNIK LTD.**

Address: No. 1206, Jianlan Road, Yinzhou District, 315040, Ningbo, China

Hotline: +86 574 87913531 87900713 | Email: [info@jingwei.com.cn](mailto:info@jingwei.com.cn) | [www.jweicut.com](http://www.jweicut.com)