



## SPECIFICATION

P/N:OP-2LSM4242-4

150  
LM/W



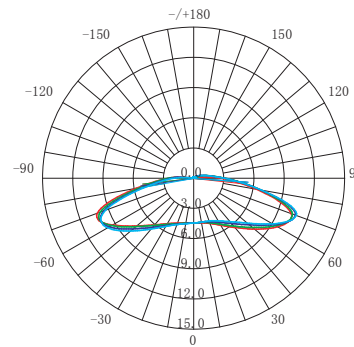
### Application:

- 3D illumination LED letters with Depth 80-300MM
- Light box with Depth 80-300MM

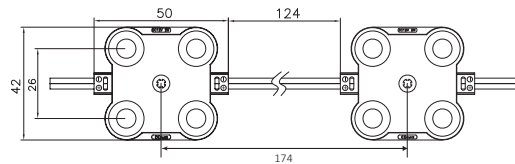
### Features:

- 2:1 Lens with wide viewing angle
- Light decay <3% for 6000hrs
- CRI>70
- 3-step MacAdam ellipse
- HB fire safety level
- IP67 waterproof
- Cuttable every module
- 5 years warranty

### Beam Angle:165°



### Dimensions:

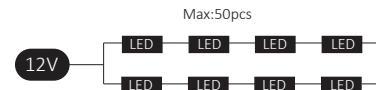
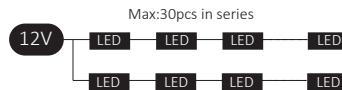


Unit:MM

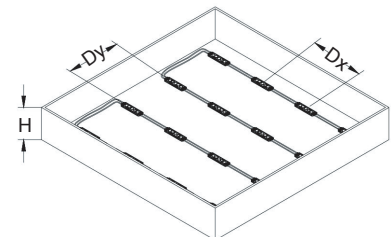
### Order INFO and Parameter:

| Part No.      | Voltage | Power/pc | Lumen/pcs | LED Type | Ra  | Housing material | Dimension    | Working TEMP    | Available Color    |
|---------------|---------|----------|-----------|----------|-----|------------------|--------------|-----------------|--------------------|
| OP-2LSM4242-4 | DC12V   | 1.44W    | 202LM     | SMD2835  | >70 | ABS              | 50*42*10.1mm | -25°C to +60 °C | 3000K/7000K/12000K |

### Installation Reference:



| Depth(H) | Dx    | Dy    | Qty/m <sup>2</sup> | Power/m <sup>2</sup> | Illumination |
|----------|-------|-------|--------------------|----------------------|--------------|
| 150MM    | 200MM | 180MM | 28PCS              | 40.3W                | 2860LUX      |
| 180MM    | 250MM | 230MM | 18PCS              | 26W                  | 1850LUX      |
| 200MM    | 240MM | 240MM | 16PCS              | 23W                  | 1560LUX      |
| 250MM    | 350MM | 300MM | 10PCS              | 14.4W                | 1030LUX      |



### Packing Details:

| Packing | Qty/chain | Qty/bag | Qty/carton | Carton Size |
|---------|-----------|---------|------------|-------------|
| Qty     | 20pcs     | 100pcs  | 1000pcs    | 54*32*43cm  |
| Weight  | 0.38KG    | 1.95KG  | 20.5KG     |             |