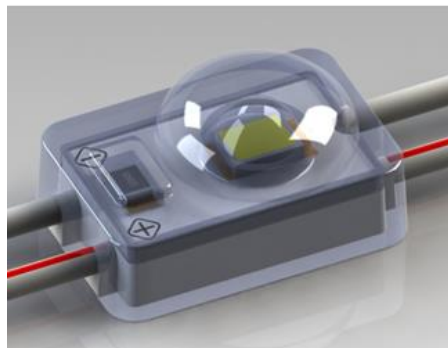


DATA SHEET: SMD SMALL LENS



**Name Series:MOD ECOLED SMD
SMALLENS 150° 1 LED 31lm PZ.50**

Product Description:



- **ECOLED SMD SMALL LENS** : 34 lumens per module (white), 150 ° lens, current control;
- Degree of resistance to dust and water splashes IP67;
- Ideal for backlighting boxed letters and small light boxes;
- Chains of 50 modules that can be cut at any point;
- Chain length: 4 meters - Cable length between modules: 3 cm;
- Reduced consumption, luminous efficiency of 94 lm / W (white);
- 5 Year Warranty.

Specific Technical Data:

LED Type

LED 2835 SMD

Available Colours

Bianco DL

Beam Angle

150°

Luminous flux per module

White WW		White DL
36		36

Lunghezza D'Onda (K/nm)

White WW		White DL
2700-3500°K		6000-7000° K

LED per module

1 LED

** Life-time

50.000 hours

** Warranty

5 Years

Electrical Parameters:

Supply Voltage

12VDC

Power per module

0,24 W - 0,36 W

Driving Method

Constant Current

Cavi e circuiti di connessione:

Wires

White/Red=positive, White=negative

Standard Length of Serial Connection

50 Modules

Physical Characteristics:

Shell

ABS

Dimension

15,3 X 10X3 X 7,8

Fixing Method:

Screw

€ 2.6 ---- € 3.0

Double Sided Tape

Premounted

Environmental Parameters:

Ambient Temperature

-25°C / +60° C

Storage Temperature

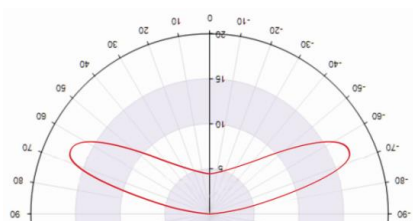
-25°C / +70° C

IP Rating

IP67



RoHS



Rev: 10/19 - FB

DATA SHEET: SMD SMALL LENS

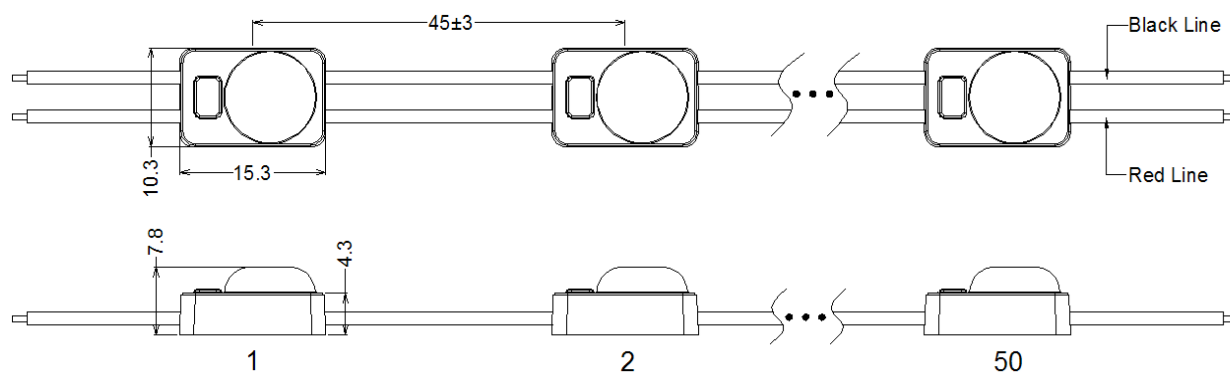


Name Series: MOD ECOLED SMD
SMALLENS 150° 1 LED 31Lm PZ.50

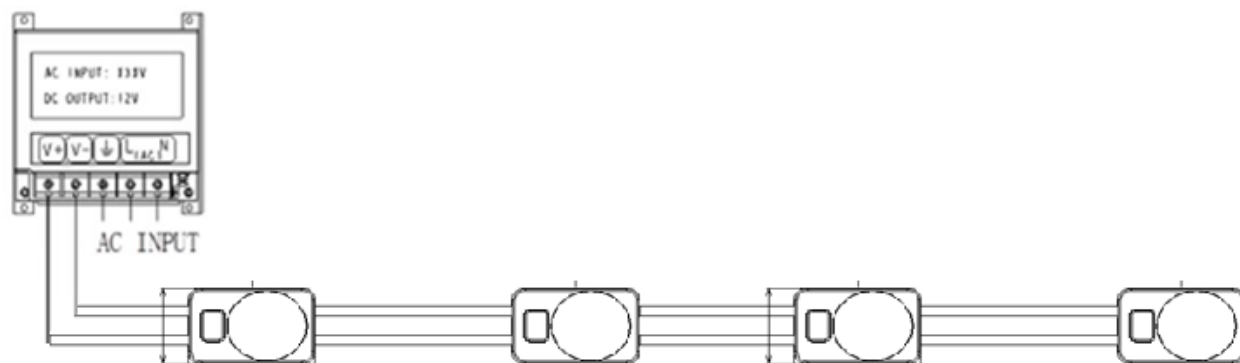
Specific Techniques:



Dimensions (mm):



Connection scheme:



Notes:

1. The thickness of the cables must be chosen on the basis of the current, the power supply, the length of the cable extension (it is recommended at a maximum of 5 m) and the loss of voltage on the wire;
 2. Both ends of the extension must be waterproofed;
 3. Do not work in contact with static-electronic or electrified environments;
 4. Possibility to connect 50 pieces in series, do not exceed and respect the connection diagrams;
 5. The use of high quality power supplies (protected against voltage drops, overload, etc.) is recommended, see our technical data sheets;
 6. Use waterproof and suitable connectors for low voltage connections;
 7. Continuous work cycle not exceeding 10/12 hours per day.
- ** See point 3, 'Warranty conditions'.
 ** The full text of our guarantee is available upon request.
- Origin Country: PRC.

CMN GROUP S.r.l.

Sede di Treviso - 31030 Vacil di Breda di Piave - Via delle Industrie, 1
 tel. 0422 632111 - fax 0422 632100 e-mail: cmn@cmngroup.eu www.cmngroup.eu